

Artefactos

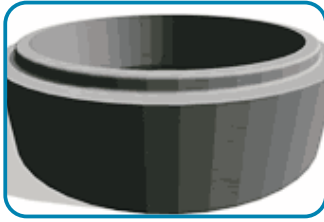
Dimensões

Peso aproximado

Anéis

d / h / e

kg/uni



1000x300

1000/300/105

300

1200x300

1200/300/105

350

1000x500

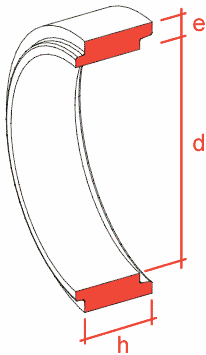
1000x500/105

400

1200x500

1200/500/105

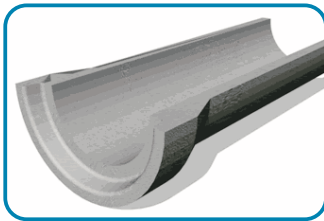
520



Meias Manilhas

h / e

kg/uni



Ø 300

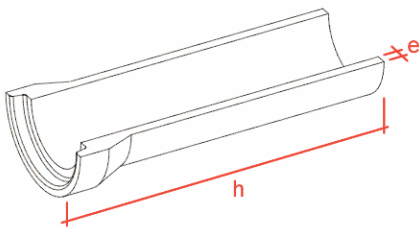
1000/35

55

Ø 400

1000/40

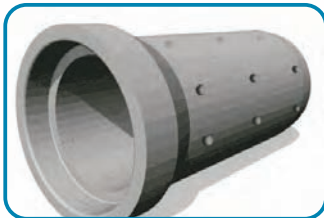
80



Manilhas Furadas

d / h / e

kg/uni



Ø 300

300/1000/35

110

Ø 400

400/1000/40

160

Ø 500

500/1000/55

260

Ø 600

600/1000/60

360

