

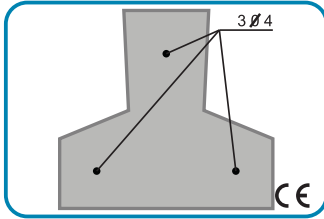
## Pré-esforço

Dimensões / Aços  
(mm)

Peso aproximado  
(kg/m)

Documento  
Homologação

### Vigotas

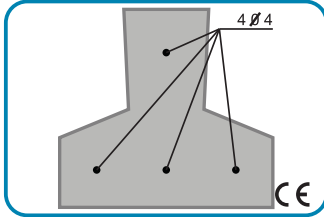


P1

113x105 - 3Ø4

18.6

DA 35

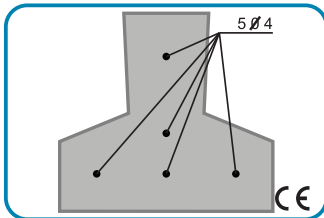


P2

113x105 - 4Ø4

18.6

DA35

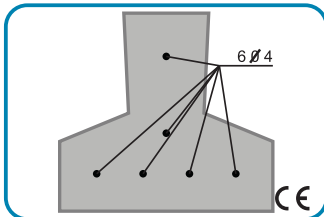


P3

113x105 - 5Ø4

18.7

DA35

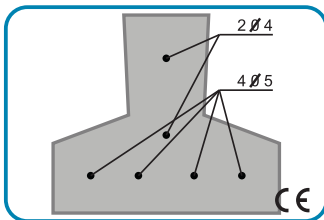


P4

113x105 - 6Ø4

18.8

DA35



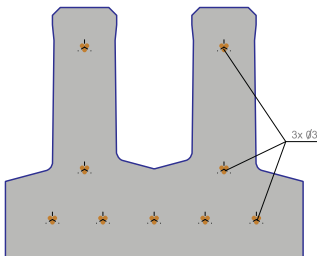
P5

120x105 - 2 Ø4+4Ø5

19.9

DA35

### Vigotas U

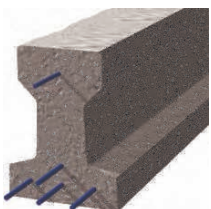


190x161 - 9 varões Ø3  
área aço:21.1 mm<sup>2</sup>

46

Estudo DEC-FCTUC

### Vigas I



160x120x90 - 4Ø 5+1Ø 4

32